



CoastWEB

PI: Nicola Beaumont



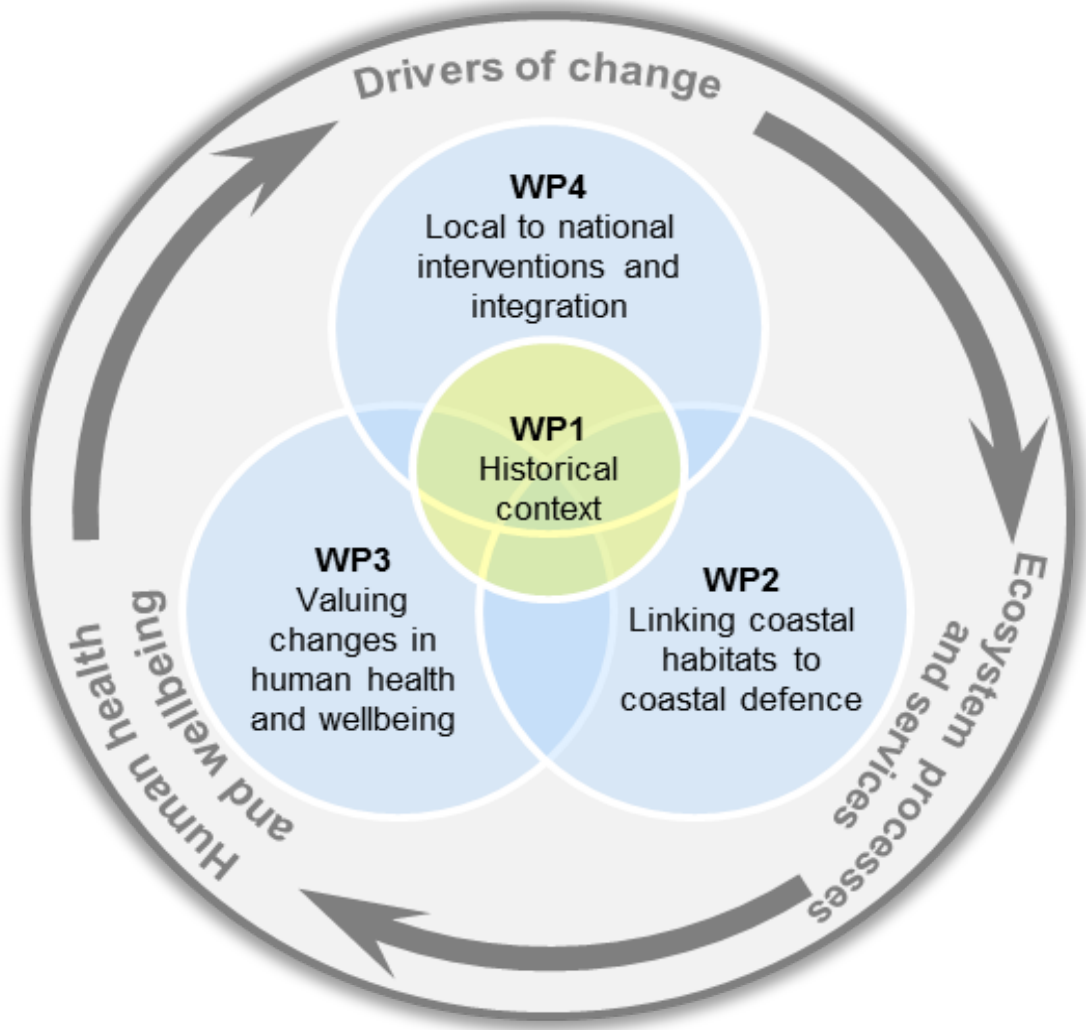
Valuing the contribution which saltmarshes make to human health and wellbeing



Nicola Beaumont, nijb@pml.ac.uk, [@NicolaBeaumon17](https://twitter.com/NicolaBeaumon17)



The Initial Idea





@Coastwellbeing
@nicolabeaumon17

Need Interdisciplinary Approaches



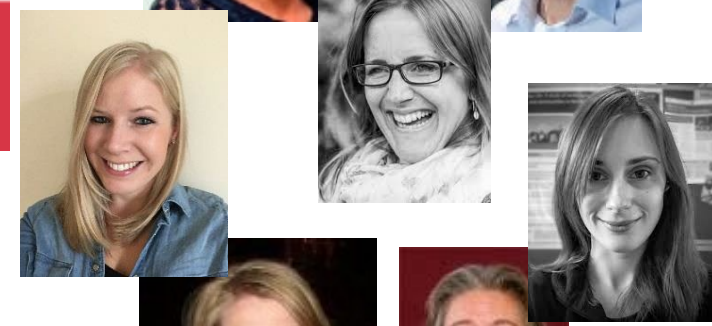


The CoastWEB Team



PML | Plymouth Marine Laboratory

CARDIFF UNIVERSITY
PRIFYSGOL CAERDYDD



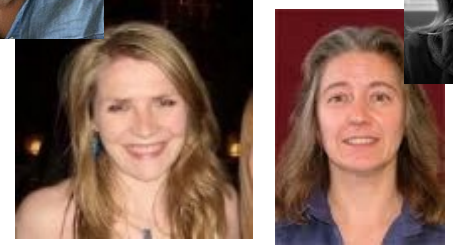
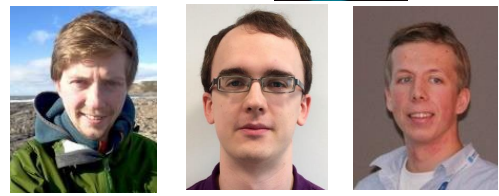
Prifysgol Abertawe Swansea University



PRIFYSGOL BANGOR UNIVERSITY

UNIVERSITY OF EXETER

Middlesex University London



CEH Centre for Ecology & Hydrology
NATURAL ENVIRONMENT RESEARCH COUNCIL

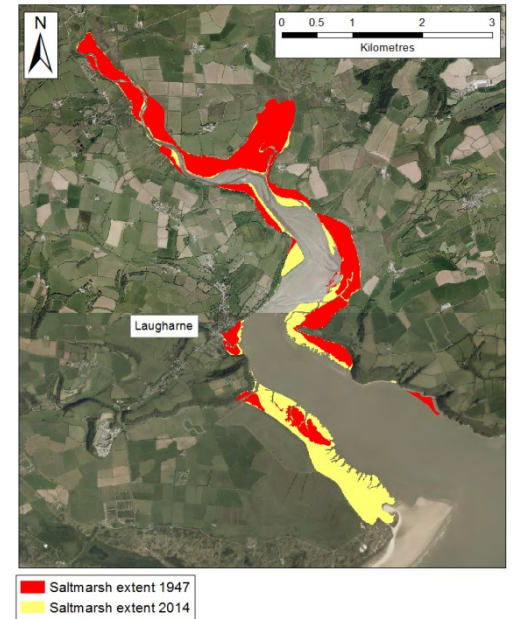
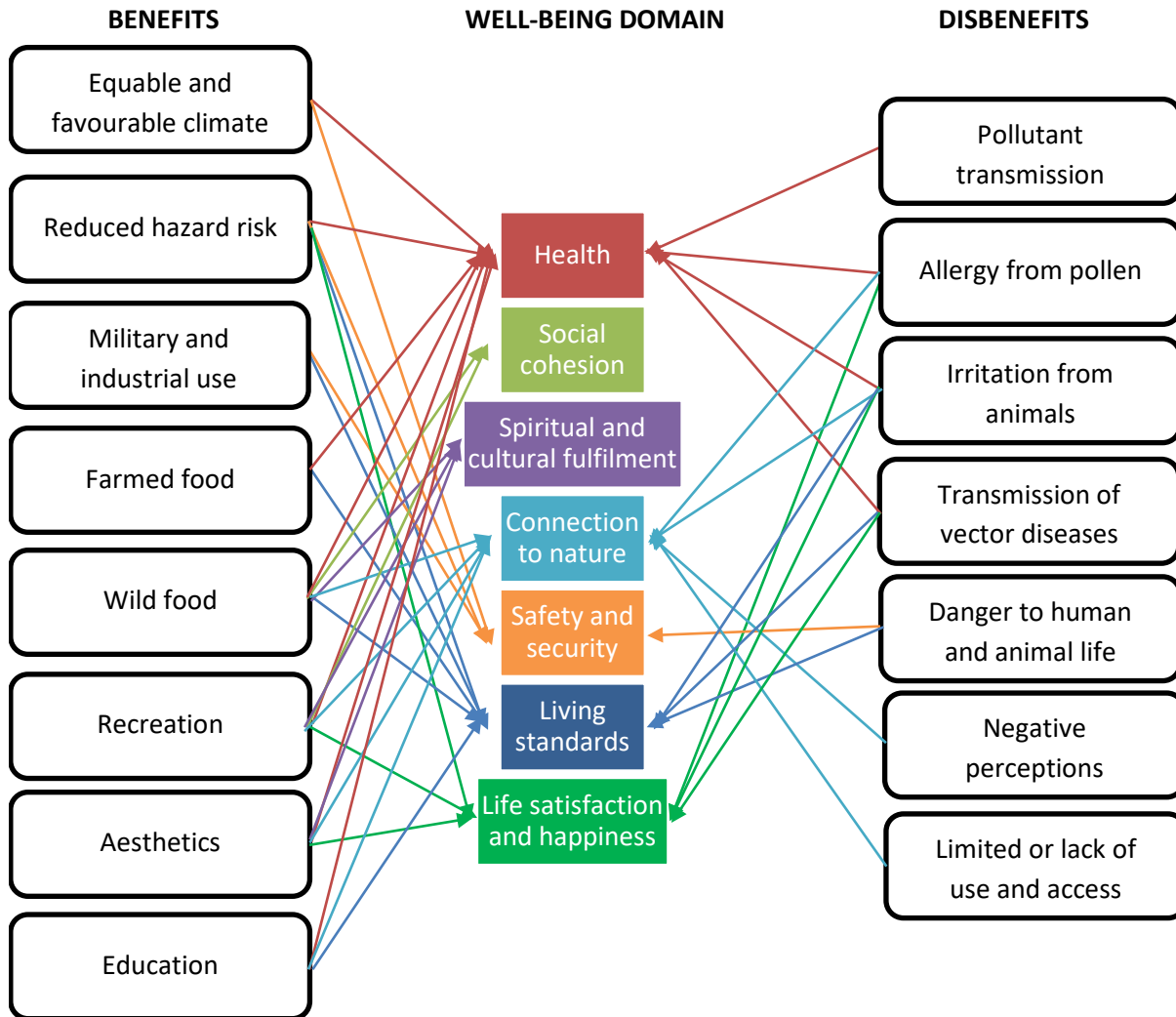
UNIVERSITY OF CAMBRIDGE



@Coastwellbeing



Linking ES and health and well-being: salt marshes case



RESEARCH ARTICLE



A framework linking ecosystem services and human well-being: Saltmarsh as a case study

Olivia R. Rendón¹ | Angus Garbutt² | Martin Skov³ | Iris Möller⁴ |
 Meghan Alexander⁵ | Rhoda Ballinger⁵ | Kayleigh Wyles⁶ | Greg Smith⁷ |
 Emma McKinley⁵ | John Griffin⁸ | Merryn Thomas⁹ | Kate Davidson⁸ |
 Jordi F. Pagès² | Simon Read¹⁰ | Nicola Beaumont¹



Multiple value types at multiple scales



@Coastwellbeing
@nicolabeaumont17

Local



Local to national interventions and integration

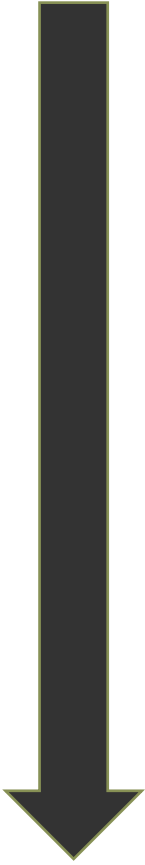
Linking coastal habitats to coastal defence

Valuing changes in human health and wellbeing as a result of saltmarsh interventions



Qualitative

Quantitative



National

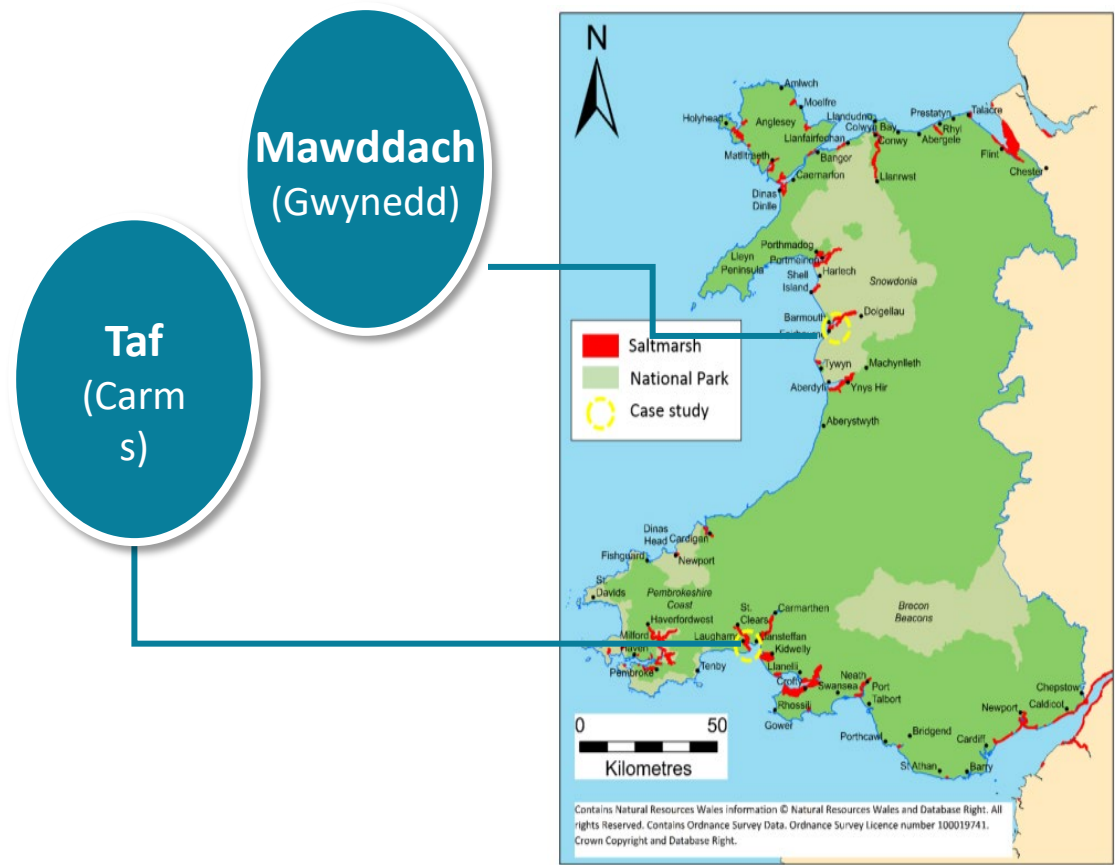


Case Study Sites



@Coastwellbeing
@nicolabeaumont17

- National scale & local scale analysis
- X2 in-depth case studies – Mawddach and Taf estuaries
- Additional estuaries – Loughor, Neath, Dee and Glaslyn





@Coastwellbeing
@nicolabeaumont17

Interdisciplinary working

- Disciplinary excellence
Simon (artist) : “not to be instrumentalised to decorate a scientific project”
- Communication
“A framework linking ecosystem services and human well”
- Respect and relationships



“The result are several collaborations, that were not even in the project call, but that are truly interdisciplinary and exciting – This wouldn't have occurred to us, if it hadn't been for the different views I have as a natural scientist (and a bit idealistic natural scientist) compared to the pragmatic views of the social fellow.”