



*Having an artist in the mix*



David Cox, Laigharne Castle 1849



J.M.W. Turner 1831







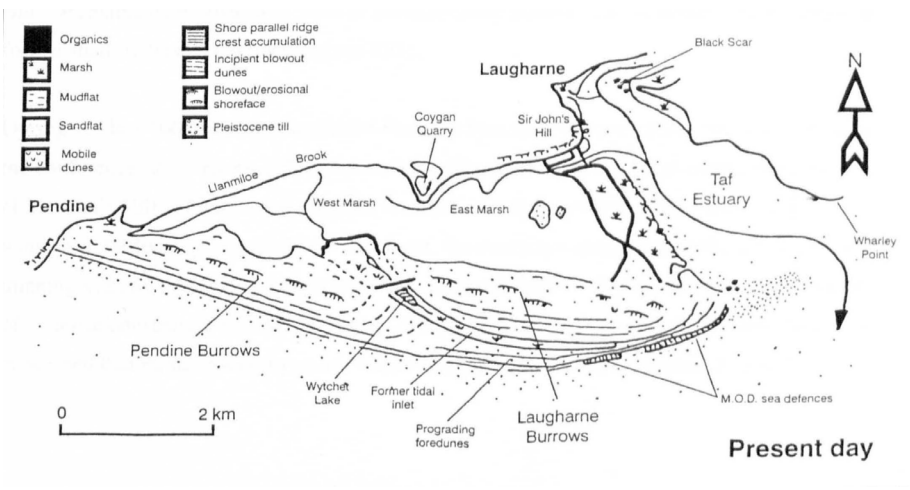
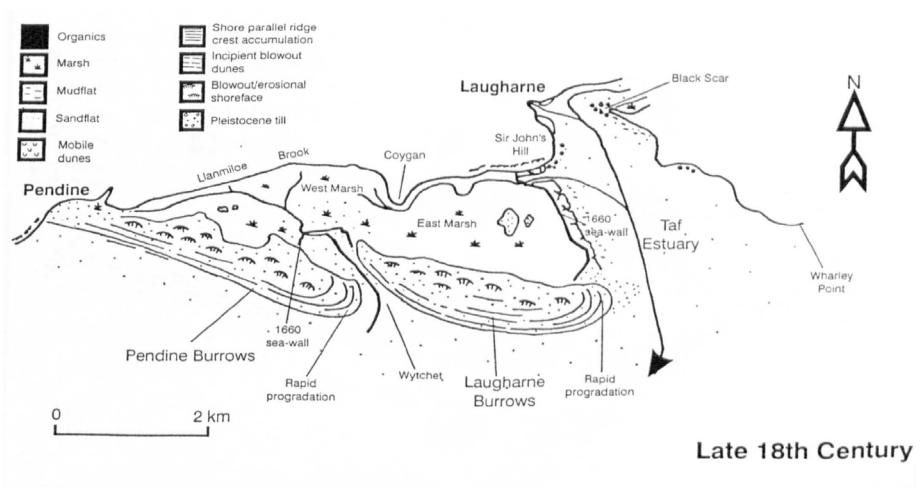
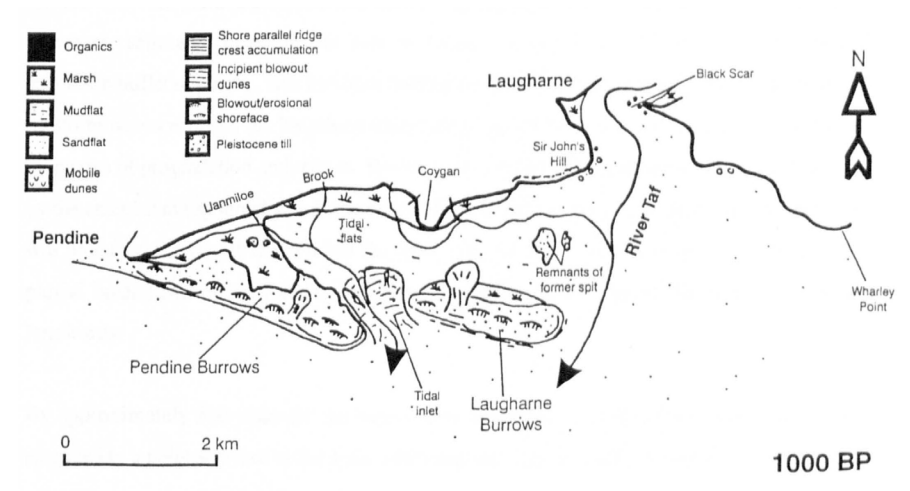
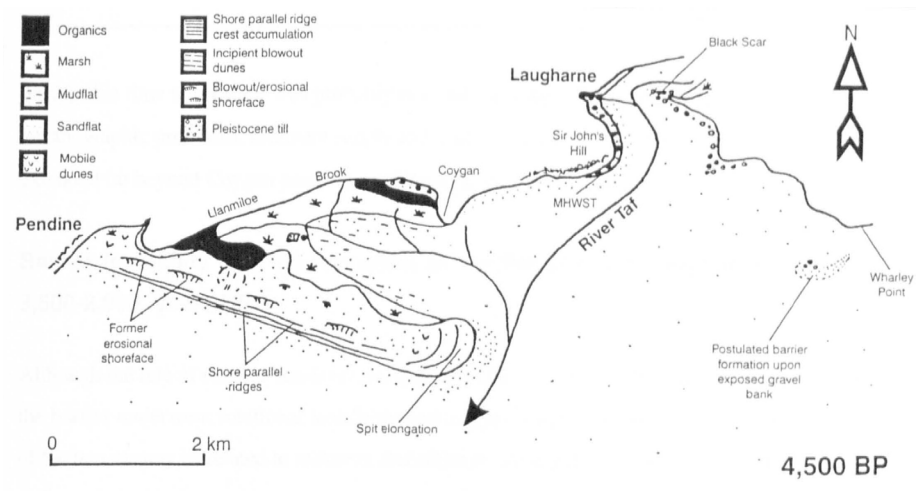








from: The Holocene evolution of a coastal barrier complex, Pendine Sands: Stuart Walley 1996.



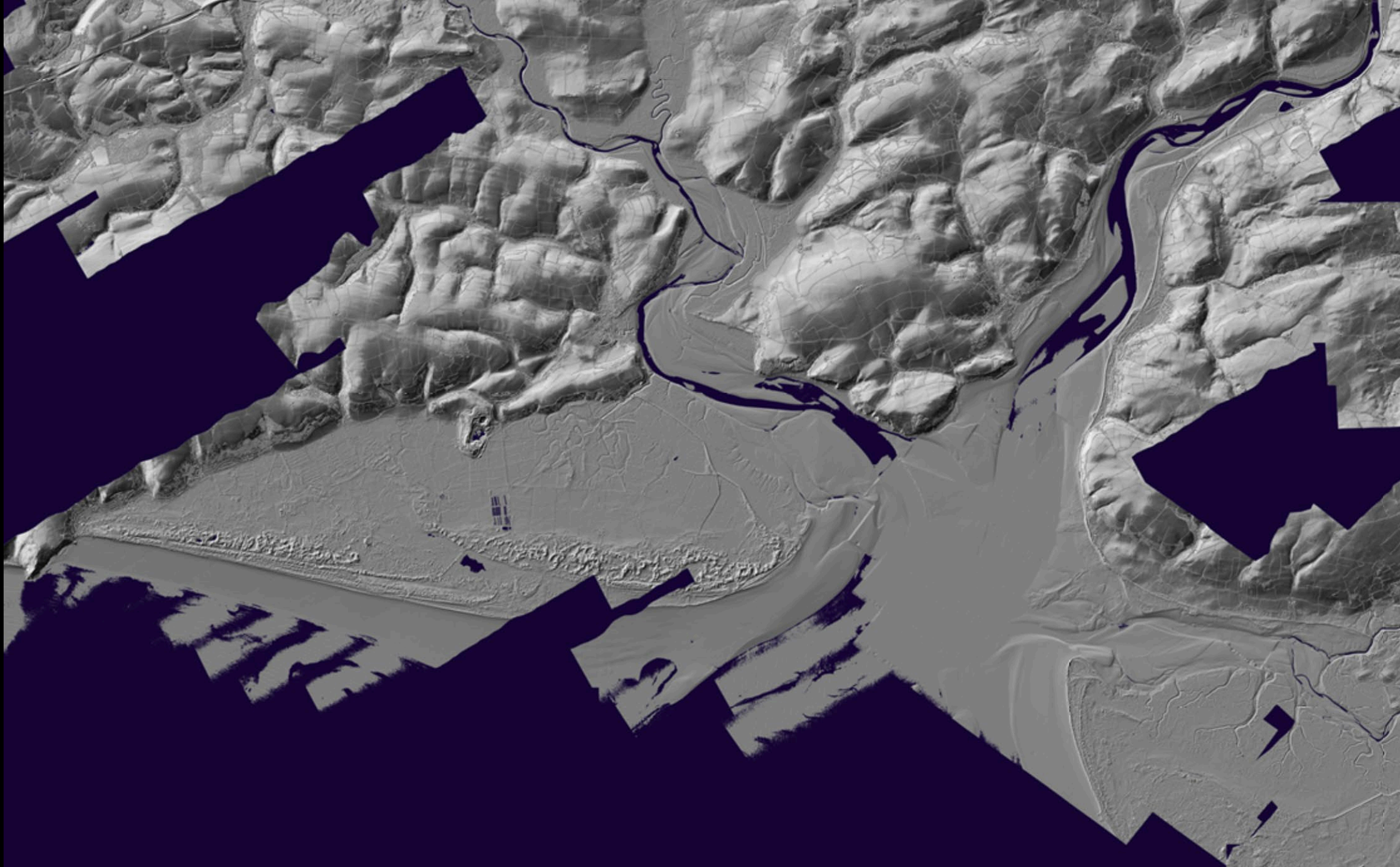




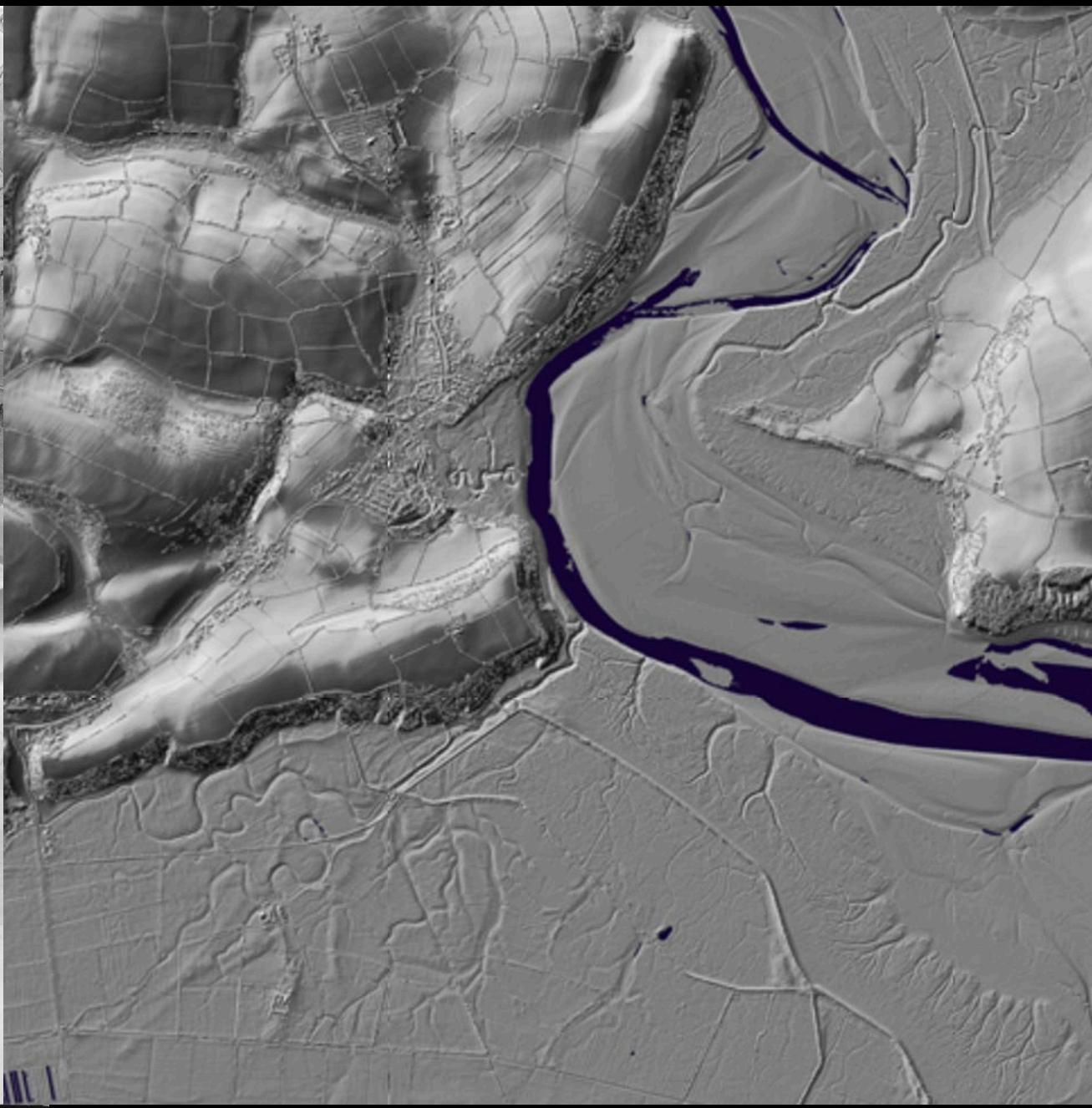






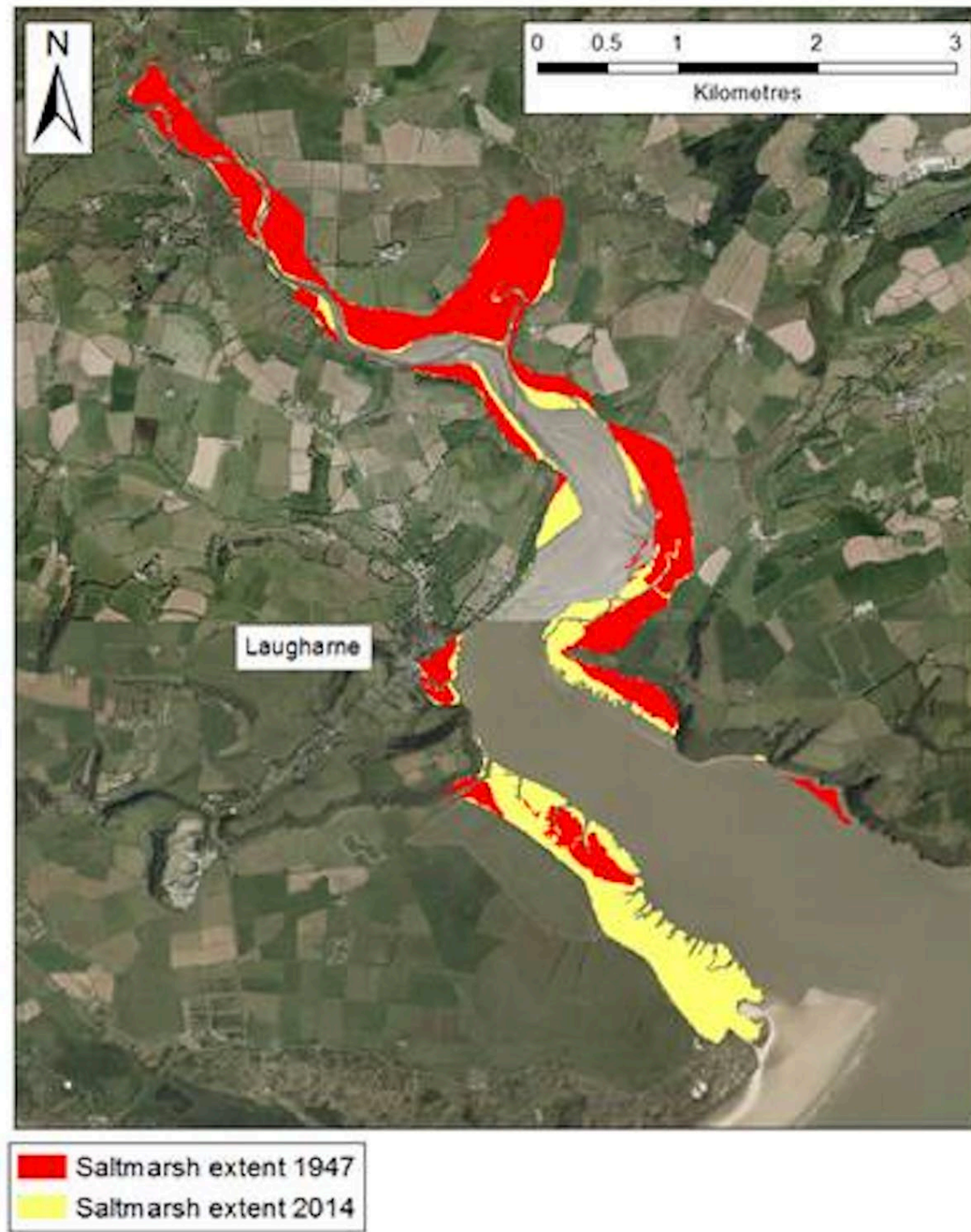






1184 1066/UK/1625.7 JUL 48 F/36 //MULTI/7/54050DN →









*This is a Story of Saltmarsh*



*Thank you for listening*

*Simon Read*

