

Supporting coastal communities 'Sea the Value' of marine restoration initiatives using participatory mapping approaches

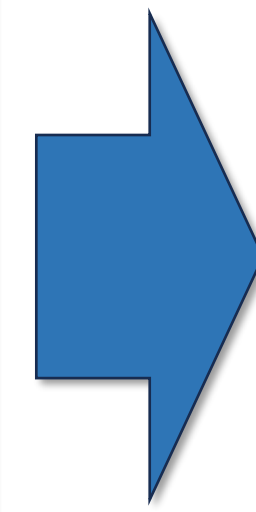
D. Burdon^{1*}, T. Potts², A. Van Der Schatte Olivier³, K. Gormley², J. Anbleyth-Evans², A. Ndah⁴, V. Paxton⁵, J. Preston³, G. Watson³ & S. Watson⁴

¹ Daryl Burdon Ltd., Marine Research, Teaching and Consultancy, Willerby, HU10 6LL (*darylburdon@gmail.com); ² University of Aberdeen, Aberdeen, AB24 3UF; ³ University of Portsmouth, Institute of Marine Sciences, Portsmouth, PO4 9LY; ⁴ Plymouth Marine Laboratory, Plymouth, PL1 3DH; ⁵ Moray Firth Coastal Partnership, Kintail House, Inverness, IV2 3BW.



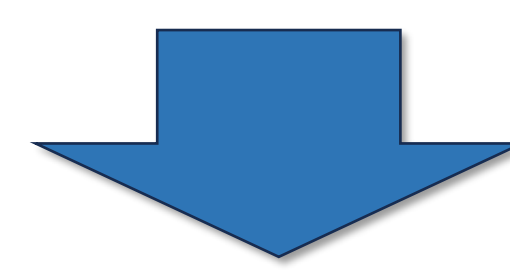
Project Aims and Objectives:

- Quantify the interlinkages between marine biodiversity, natural capital, and ecosystem services, considering quantity & quality.
- Determine the economic and social values associated with benefits of carbon sequestration and bioremediation of waste and apply to support natural capital accounting and community benefits.
- Connect the ecological, economic, and social values of biodiversity to decision-making through co-design and supporting of green investment to enhance biodiversity.
- Two case studies: Cromarty Firth (Scotland) and the Solent (England).



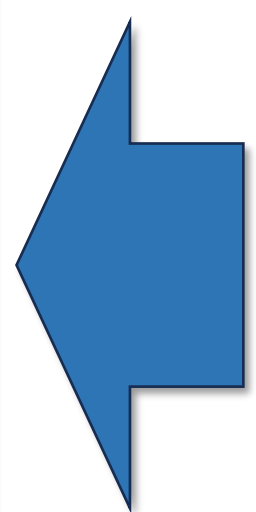
Why use a Participatory Mapping Approach?

- Driven by stakeholders at all stages.
- Creates a shared common language.
- Improves understanding of the links between natural features and benefits.
- Captures local knowledge.
- Generates outputs for communities.
- Supports organisations to assess their own reliance on natural capital features.
- Identifies shared reliance on natural capital features and the benefits they deliver for society.



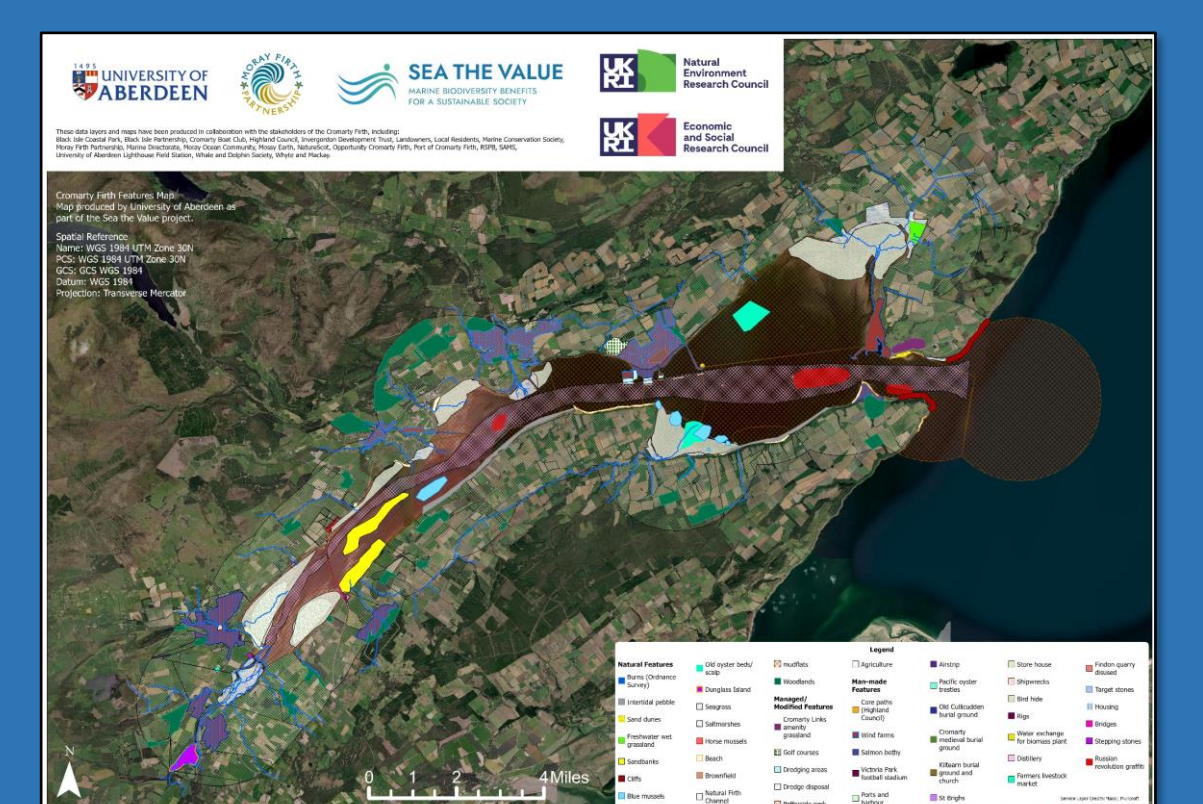
Workshop Outputs for Coastal Communities

- Features maps in hard copy and digital format for use by local stakeholders and in the wider community (e.g. schools, libraries).
- Interactive pdf which illustrates the links between natural capital features and the benefits they deliver for society.
- Online maps which visualise the features and benefits.
- New stakeholder networks who can talk in a common language.



Workshop Series

- Workshop 1: Identifies and maps the natural capital features and the benefits they deliver for society.
- Workshop 2: Explores the trade-offs between benefit provision under future management scenarios (e.g. managed realignment or native oyster restoration).
- Workshop 3: Identifies and scores the relative importance of linkages between the beneficiaries and the benefits delivered by the natural capital features.



Benefits	1	2	3	4	5	6	7	8	9	10	11	12	13	14	15	16	17	18	19	20	21
1 SB1 Food (wild, farmed) / Drink																					
2 SB6 Healthy climate (Carbon Sequestration)																					
3 SB7 Prevention of coastal erosion																					
4 SB8 Sea defence																					
5 SB9 Waste burial / removal / neutralisation																					
6 SB10 Tourism / Nature Watching																					
7 SB11 Spiritual and cultural well-being																					
8 SB12 Aesthetic benefits																					
9 SB13 Education, research																					
10 SB14 Physical health benefits																					
11 SB15 Psychological health benefits																					
12 SB16 Wind energy																					
13 SB17 Water resources (quality and quantity)																					
14 SB18 Archaeology / Geology / Geomorphology																					
15 SB19 Place to live																					
16 SB20 Place to work																					
17 SB21 Industry																					
18 SB22 Habitat / species biodiversity																					
19 SB23 Intrinsic value																					
20 SB24 Functioning ecosystems																					
21 SB25																					

Beneficiaries	1	2	3	4	5	6	7	8	9	10	11	12	13	14	15	16	17	18	19	20	21
Cromarty Boat Club	1	1	1	1	1	1	1	1	1	1	1	1	1	1	1	1	1	1	1	1	1
Moray Firth Coastal Partnership	1	1	1	1	1	1	1	1	1	1	1	1	1	1	1	1	1	1	1	1	1
SEPA	1	1	1	1	1	1	1	1	1	1	1	1	1	1	1	1	1	1	1	1	1
Highland Council	1	1	1	1	1	1	1	1	1	1	1	1	1	1	1	1	1	1	1	1	1
Port of Cromarty Firth	1	1	1	1	1	1	1	1	1	1	1	1	1	1	1	1	1	1	1	1	1
Whyte & Mackay	1	1	1	1	1	1	1	1	1	1	1	1	1	1	1	1	1	1	1	1	1
Scottish Water	1	1	1	1	1	1	1	1	1	1	1	1	1	1	1	1	1	1	1	1	1
RSPB	1	1	1	1	1	1	1	1	1	1	1	1	1	1	1	1	1	1	1	1	1
Moray Ocean Community	1	1	1	1	1	1	1	1	1	1	1	1	1	1	1	1	1	1	1	1	1
NatureScot	1	1	1	1	1	1	1	1	1	1	1	1	1	1	1	1	1	1	1	1	1
Marine Directorate	1	1	1	1	1	1	1	1	1	1	1	1	1	1	1	1	1	1	1	1	1
Academia	1	1	1	1	1	1	1	1	1	1	1	1	1	1	1	1	1	1	1	1	1
Landowners	1	1	1	1	1	1	1	1	1	1	1	1	1	1	1	1	1	1	1	1	1
Black Isle Partnership	1	1	1	1	1	1	1	1	1	1	1	1	1	1	1	1	1	1	1	1	1

Acknowledgements: This research was supported by the UK Research Councils under Natural Environment Research Council award NE/X002357/1 Title: Sea the Value. The participatory mapping methods follow that outlined by Burdon et al. (2022) Linking natural capital, benefits and beneficiaries: The role of participatory mapping and logic chains for community engagement. *Environmental Science & Policy*, 134, pp. 85-99. <https://doi.org/10.1016/j.envsci.2022.04.003>

